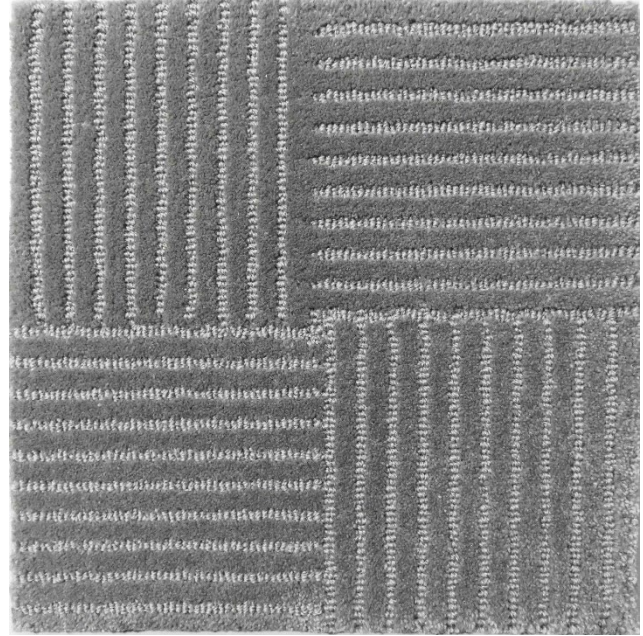


Product ID Card

Edition Name	Mach 1
Design Name	Scottsdale I
Part Number	EF-Scottsdale I
Content	100% New Zealand Wool
Construction	4 ends Cut, 4 ends Loop
Pile Height	10mm, 9.5mm
Colors	Cut: M620 Aileron(4) Loop: M620 Aileron(4)

Production Size	9' Maximum width
Lead Time	4-6 weeks

*For best production schedule and delivery options,
please contact your sales representative.*



Size Shown 1'x1'